

# Annual Report 2023-2024



**summer**

Community Residents'  
Association & Hub

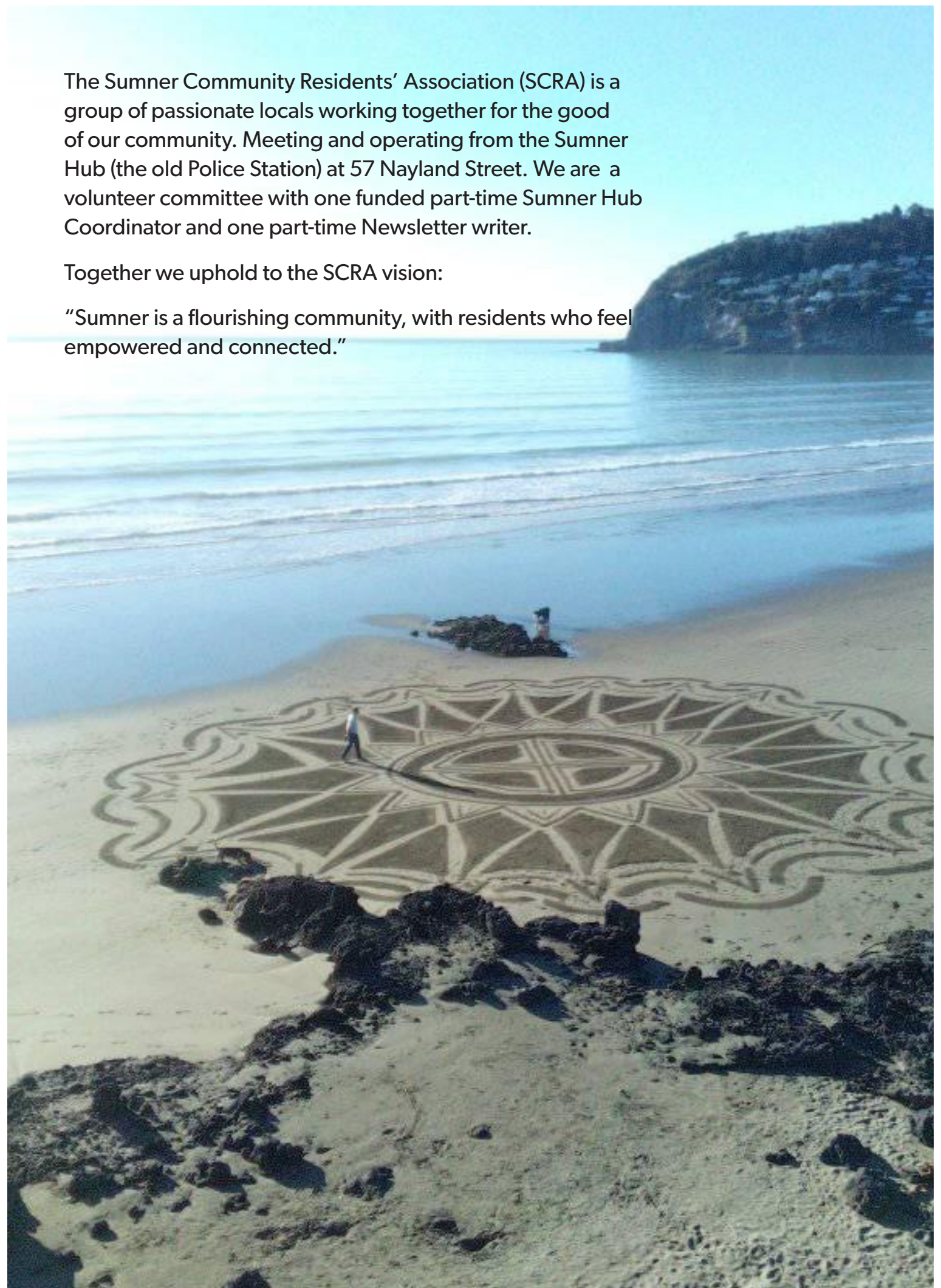
# Contents

<b>Our Vision</b>	<b>2-3</b>
<b>Letter from our Chair</b>	<b>4</b>
<b>Meet the SCRA Committee</b>	<b>5</b>
<b>SCRA Annual Snap Shot</b>	<b>6</b>
<b>Meet The Hub</b>	<b>7</b>
<b>SCRA Initiatives at the Hub</b>	<b>8-9</b>
<b>Grant Funded Projects</b>	<b>10-11</b>
<b>Community Events Supported</b>	<b>12</b>
<b>SCRA fullyfunded workshops</b>	<b>13</b>
<b>Hub Projects total reach</b>	<b>14</b>
<b>Delivered and On-goingProjects</b>	<b>15</b>
<b>On-going community connection</b>	<b>16</b>
<b>Stats NZ Census Demographics 2018</b>	<b>17</b>
<b>Appendix of Financial Statements</b>	

The Sumner Community Residents' Association (SCRA) is a group of passionate locals working together for the good of our community. Meeting and operating from the Sumner Hub (the old Police Station) at 57 Nayland Street. We are a volunteer committee with one funded part-time Sumner Hub Coordinator and one part-time Newsletter writer.

Together we uphold to the SCRA vision:

"Sumner is a flourishing community, with residents who feel empowered and connected."



# SCRA Strategy

## Our Vision

Sumner is a flourishing community, with residents who feel empowered and connected.

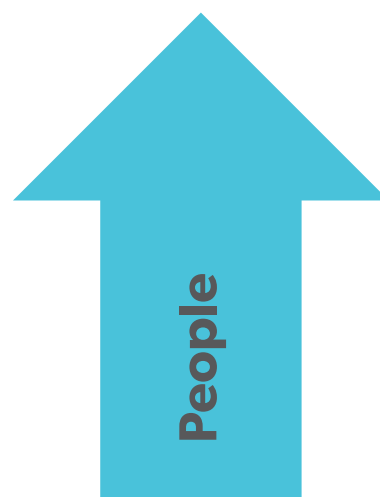


## Our Values easily translate into 4 Focus Areas



**We care about protecting our natural environment.**

July 2024- We will promote : circular economy, waste minimisation through no more single use habits



**We care about increasing neighbourliness.**

July 2024: We will ensure the seniors have an evacuation plan and include neighbours in the plan

## Our Mission

To educate, engage and be advocates for our community.

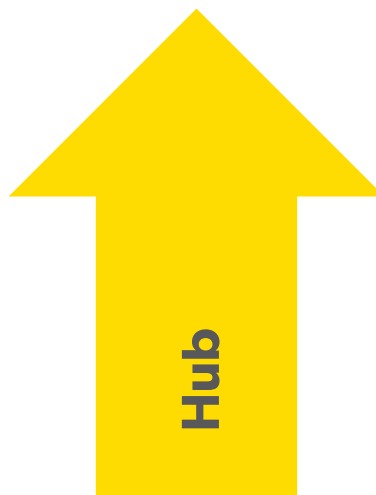
## Our Values

- Sustainability - Environment
- Connection - People
- Empowerment - Advocacy
- Participation - Hub Projects



**We care about advocating on local issues.**

July 2024: We will continue to report crime and stay well connected to each other for a safer community



**We care about creating an inviting Sumner Hub.**

July 2024: We will continue to expand our offerings by working with CCC to secure more land in the Red Zone

# A letter from our Chair



We use a Māori Whakatoki (proverb) for SCRA:

**Ehara tāku toa i te toa takitahi, engari he toa takitini.**

Success is not in the strength of an individual, but in the strength of many.

I speak on behalf of our wonderful, action orientated committee, when I say thankyou to our loyal supporters and funding bodies. It is this collective effort that makes Sumner a vibrant place to live. There have been hundreds of hours spent on diverse initiatives, as you will see displayed in our annual report.

The past year has been full of positive changes for SCRA, focused around how we communicate. Having a physical presence in the community increases our reach and quality contact time with residents, business and visitors. We would like to thank NZ Police for the continued use of the Hub and the Lottery Grants Board for our administration grant, which keeps the Hub doors open. The Hub is a community meeting place for everyone. We welcome new ideas for running workshops out of the Hub.

We thank our local Community Board (Waikura Linwood-Central-Heathcote) for staying connected with us over the year and supporting us with funds from Creative Communities, Sustainable Communities, and Strengthening Communities grants.

The focus for SCRA in 2024 was to increase our transparency which included connecting with our neighbouring groups. Our efforts to share information are across a new web site, posting digital minutes, and significant engagement on social media. Our digital newsletter has been linked to our facebook page and is also being printed for those who prefer a hard copy.

To increase our connection with neighbouring communities, we specifically engaged with Redcliffs Residents' Association and Lyttelton's Whakaraupo Hub to discuss our unique emergency evacuation plans. We believe that meeting neighbours; strengthens our resilience, which is why we held our own workshops/ meetings at Club Redcliffs, Sumner Bowling Club and Sumner Tennis Club.

Our new Hub Coordinator, Jim has been instrumental in relationship building across our community. Jim's energy has encouraged and fostered Hub volunteers who help keep the doors open for more hours each day.

I especially want to thank our Deputy Chair, Nikki Wallace-Bell and our Treasurer, Joy Fabian, for their outstanding commitment in time and energy to ensure the success of the Hub projects and SCRA.

Ngā mihi, Andrea Davis, SCRA Chair



# Meet our SCRA Committee



Deputy Chair

Nikki Wallace-Bell member since 2020, is the Hub Projects lead and runs Art at Sumner Hub as well as a range of ceramic workshops.



Treasurer

Joy Fabian member since 2022. Joy comes from years of banking experience and is a committed member of our team.



Hub Project Member

Mark Wallace-Bell member since 2019, runs one of the Sumner Hub projects, Sumner Bikery



Hub Project Member

Kirsten Wylie member since 2021. Kirsten runs Sumner Hub project Plant Powered and also organises the Artisan Market and Clothes Swap.



Committee Member

Liza Sparrow, has remained on the committee to see through the Sumner Green and Skate project.



Hub Project Member

Lucas Sampaio member since 2021. Lucas co-founded the Goat Shed project (Surfboard Library) and runs shaping and building workshops.



Committee Member

Charlot Hudson has joined the committee after her years as Hub Coordinator, assisting with the Green and Skate project.



Committee Member

Simon Brown has lived in Sumner since the 1980s and is an avid surfer and kaitiaki of the Ocean and our Esplande.

# SCRA Annual Snap Shot

## Facilitated Community Actions 2023-2024

**3**

successful  
funding  
streams

**14000+**

hours the Hub  
doors were open  
recording 185 visits

**30000**

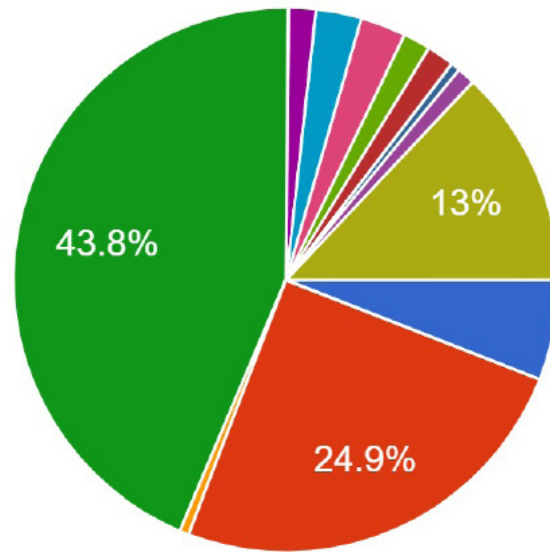
followers on our Facebook page

**28**

surfboards  
built and  
repaired

**15**

bikes  
repaired



Visits to the  
Hub were  
43.8% about  
community,  
and 25% lost  
property.

Visit duration  
was between  
15 and 30  
minutes.

**35**

surfboards borrowed  
from the library (Goat  
Shed)

**1347**

people (incl. 573  
youth) attended  
classes, workshops  
and events

**9**

bikes given back to the  
community

**64**

people  
attended our  
subsidised koha  
workshops

**77000+**

kms travelled in the  
Community Van 141  
trips

**4**

artisan craft  
markets at The  
Hub



# Meet our new Hub Coordinator

## Report 2024

It has been another busy year at the Sumner Hub with contact hours increasing for face to face interactions. Since joining the team in Feb, I have worked hard to nourish our connections in the community with groups within Sumner and as far as Lyttelton and Heathcote.

We have recently completed the AED compliance work (deployed and saved three lives last year). Our volunteer, Sara, has worked tirelessly on the creation of an updated directory, both digital and print versions.

The content of our newsletters has been a collaboration between committee and myself. We have engaged Caroline to create and link these to our facebook page, which has increased our reach. We understand not all residents use facebook which is why we have started distributing physical copies of our newsletter to local businesses, in order to reach more people.

The Hub connections with the youth and seniors has been a focus for me and with regular meetings, we are finding ways to assist each other. I see how lucky we are in Sumner, to have individuals give so much of their time to improve the wellbeing of others in the community. It is critical that the operation of the Hub evolves to stay relevant, accessible, and connected with the people who live here.

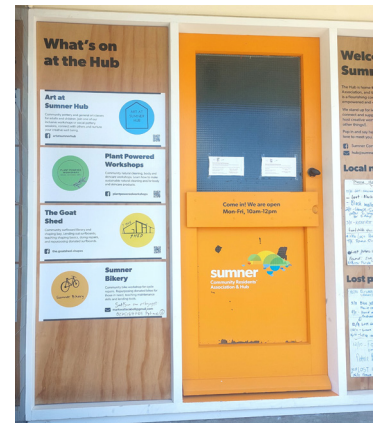


## Daily Activities

- The Hub is open 10-12 Mon, Tue, Thr, Fri and 4-6 Wed.
- "Lost and Found" for keys, phones and wallets
- Our noticeboards
- Up Cycle homewares "Plenty to Share"
- E Waste drop off
- Computer and internet access
- Space available for meetings outside of library hours
- A cup of tea and a chat
- Up to date information about our community
- Portal for CCC information streams



Caroline Bruner is our newsletter creator and is responsible for an increase in our readership.



## Meet our Hub Volunteers 2024



Sarah



Gay



Gayle

# On-going SCRA Initiatives



## Sumner Community Van

The van is well used, with bookings and payment administered by SCRA. Jim has facilitated the maintenance and booking systems for better work flow.

The van is used regularly for groups as well as bookings for small private outings. Anyone is welcome to book the van for an outing.

*"The use of the van is an important asset to the local students who attend St Bede's School. It enables us to transport our children to school safely and sustainably."*



## Artisan Markets at The Hub

We supported the continued seasonal artisan market days. The stall holders are excited to be coming together in spring and summer. The vision for 2025 is for a more visible space on the new Village Green and expand the stall holders to include organic produce and items our community values.



## Plenty to Share at the Hub

The Plenty to Share stall has its new home in 2023 at the Sumner Hub. It is hugely popular and offers a space for donated goods to become treasures in new homes. The stall is maintained daily by the Hub and volunteer team to keep it tidy and appealing. Extra home grown produce is also available to share through the stall at The Hub.



# SCRA Initiatives for Community Connection



## Social Pottery and Subsidised Workshops

Social pottery on a Wednesday night at the Sumner Hub provided an equitable opportunity for those with some experience to pot and enhance wellbeing through a connection with clay.

"I'm a Keeper Sumner!" enabled people to attend a keep cup making opportunity at a subsidised rate.

An adult and a child have been able to attend art and pottery classes, through a SCRA donation scheme. This initiative is something we would like to expand.

*"I am feeling grateful for this opportunity to share tools, equipment and firings with fellow fun creatives"*  
Caroline Social Potter



**The Sumner Bikery-** Sharing knowledge about bike repairs and encouraging bicycles as a way to travel around our village aligns with CCC goals of carbon reduction.

Is operating from a home address. People now make contact using the following mobile number-0275184789 .

Bikes are donated at the Hub often saving them from landfill. Mark helps locals fix their own bikes and spends his free time breathing new life into mature bikes.

The Bikery also donates bikes to members of the community who have the need of a reliable bike.



## The Goat Shed Surfboard Library at Sumner Hub

Lucas and Carlos co-founded this project. Surfboards can be repaired, built or borrowed. SCRA supports this initiative because it promotes personal connection and has benefits for mental health.

SCRA has subsidised an event at the local Tuawera Classic covering the cost of materials for a new board. This board was used in a roulette surfing competition and was also a prize.

# SCRA and CCC funded projects

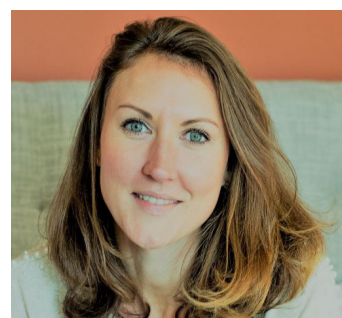
## Coast Guard Mural - Creative Communities Grant



SCRA was awarded funds from the **Creative Community Grant Scheme in 2023**. We at SCRA have seen through the completion of two murals;

The Coast Guard mural educates viewers about responsible use of the marine environment. We see the value of the Coast Guard's to our community as critical.

This activity was an opportunity for locals to connect, pick up a brush, and be part of creating



Emily Quane was our project lead for the Creative Communities Grant.

Oli Ailawa was the local artist who designed both murals, and oversaw the painting of the first mural which hangs outside the Hub.



# SCRA and CCC funded projects

## I'm a Keeper Sumner! - Sustainable Communities Grant

Our Keep cup scheme began in 2023. Nikki Wallace-Bell ran this as a Hub project, fully funded by SCRA. The outcome of this was lending library of cups. This was held at a local cafe and trialed for 3 months, using an app.

On review, this scheme failed. Customers wanted to buy the cups rather than borrow.

### Plastic Free July PFJ 2024

SCRA ran a further round of "I'm a Keeper" cup making workshops at the Hub. This time the initiative was part funded by CCC's **Sustainable Communities Grant**, with SCRA making up 40% of the funds. As a committee we led by example and took the PFJ pledge to refuse single use cups.

### Main Focus for 2024

Create greater awareness in our community of single use coffee cups.

The conversation was started by us with businesses in hopes to make positive change for the future generations.

Two local cafes embraced this sustainability project and will lead by example in 2025. They will use and sell keep cups made in the Hub workshops and invest profits into further keep cup making.

*"The camaraderie amongst the participants as we all made our keep cups was great. I also appreciated the subsidy as I have applied for many grants in the past. It was nice to be at the receiving end for myself and to enjoy the experience as well"* Mandy





# SCRA -Supported Community Events



**Tuawera 2024-** is a local retro surfing event, enjoyed by young and old. This took place on the 19th and 20th of October on our beach. This was supported by SCRA with \$1600 to help with the costs of live music and surfboard shaping demonstration held at the Goat Shed (Hub Project). The board that was shaped was used in a roulette style surfing competition and was also a prize.

This was a meaningful event for our surfing community, and heaps fun for everyone attending over the two days.



**Clothes Swap 2024-** SCRA was excited to support the Community Clothes Swap on the 14th September. This idea evolved out of our July strategic planning session and our concerns over the impact clothing waste has on our carbon footprint as a society.



**Christmas Lunch for Seniors-** Last December we had a turn out of 30 seniors and 10 children from the school to sing during lunch. SCRA bought the ham and trimmings, and contributed with decorating the tables and serving lunch.

This was a joint project with Sumner Bays Union Trust. We are planning a similar event for this December

# SCRA fully supported workshops

**How these work:** With funds generated from our regular Hub projects such as Art, Pottery and Surf Board repairs. SCRA gave each Hub project \$200 to create two koha only workshops.



Sea Week- White flipped penguins out of clay



Connecting with Nature- Art sessions about the beauty of nature



Plant Powered- participants learn how to make 100% natural household products



Matariki making Whetū Star Garlands



Senior Bike Repair workshops

# Snap Shot of Sumner Hub Projects and their reach

## Art At Sumner Hub - 1240 Participants of classes and workshops this year



Community art, craft and pottery classes for adults and children.

- Social Pottery - an adults Koha only pottery session that gives an equitable opportunity for those with experience to pot. Enhancing wellbeing through a connection with clay is the focus.
- Koha only art/craft workshops that enhance CCC messages or cultural celebrations. These are supported by funding from SCRA and hub
- General art/craft classes for children, held two days a week throughout the school term and occasionally through the holidays
- Pottery classes and workshops for adults held two evenings a week throughout the school term and some Sundays



## The Goat Shed - 35 Loans, 25 Repairs, 3 Boards shaped and made

Community surfboard library and shaping bay.

- Teaching surfboard shaping basics
- Surfboard repairs, upcycling and repurposing donated surfboards
- Enabling and promoting Surf Therapy to support mental and physical health



## Plant Powered

Community natural cleaning, body and skincare workshops.

- 16 participants attended 1 Workshop
- Koha only workshop opportunities for adults and teenagers to learn how to make sustainable natural cleaning and/or body and skincare products. These are supported by funding from SCRA and hub

## The Sumner Bikery

Community bike workshop for cycle repairs, tools and bicycle lending.

- 12 repairs
- 9 Bikes donated and repurposed
- Repurposing of donated bikes - gifted to those in need
- Koha only bike care workshops for youth and seniors to maintain cycling safety
- Encouragement of sustainable transport options.





# SCRA Project Delivered Nov.'24' - Skate and Green



We celebrated the start of the building project with a Turf Turning this winter. We thank the work by Hunter Civil and the hours put in by Damian Doyle and the rest of the Sumner Skate and Green committee.

During the current financial year, Sumner Green & Skate (SG&S) did not receive funding for the maintenance of the temporary ramp at the corner of Nayland Street and Wakefield Avenue. Instead, upkeep has been managed by the SG&S team, supported by a dedicated group of parents and local skaters.

The Sumner Bays Skate Project and Sumner Village Green are on track for completion in mid-November, with an official opening scheduled for 30 November. Looking ahead, SG&S will continue to maintain the temporary ramp, while the Christchurch City Council will oversee all aspects of the new skate park and green space.

## Sumner Emergency Preparedness

This continues to be an ongoing body of work for SCRA.

We received a \$3250.00 grant from the CCC Strengthening Communities fund. The message about what to do in an emergency is often left behind. Our aim is to share a coordinated message with the wider community organisations, to ensure everyone has a plan. This work is planned to be completed by March 2025.

This year we also received funding from Community Grants (COGS) for 50 grab bags. We will prepare these bags for the seniors and vulnerable members of our community. We continue to talk with our neighbours in Redcliffs and Lyttelton about a joint funded container available for emergency services.

## Projects we continue to work on



# SCRA's Ongoing Community work in 2024-2025

## Working Together

SCRA continues to connect and share ideas and resources with other community groups and organisations. We engage regularly to ensure we deliver the best community service to our residents.

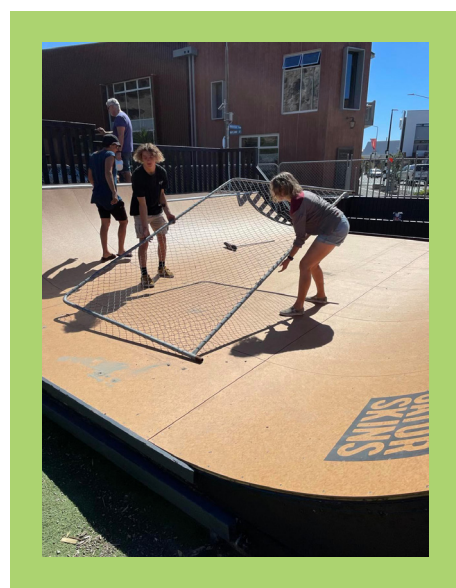
- Matuku Takotako Sumner Centre
- Sumner Bays Union Trust
- Shoreline Youth Trust
- Sumner Youth Group
- Sumner Redcliffs RSA
- Sumner Ferrymead Lions
- Matuku Theatre Group
- Sumner Business Association
- The Rock Church Sumner
- Anglican Parish
- Catholic Diocese
- Sumner preschools
- Star of the Sea School
- Sumner School
- Sumner Health Centre and Sumner Pharmacy
- Sumner Volunteer Fire Service
- Sumner Coast Guard
- Sumner and Taylors Mistake Surf Life Saving groups
- Fulton Hogan
- Sumner Dippers
- Christchurch Coastal Pathway



## Local issues

In 2024 we had several local issues we advocated for on behalf of our community. These issues entailed SCRA to engage with the key agencies, such as our community board and CCC.

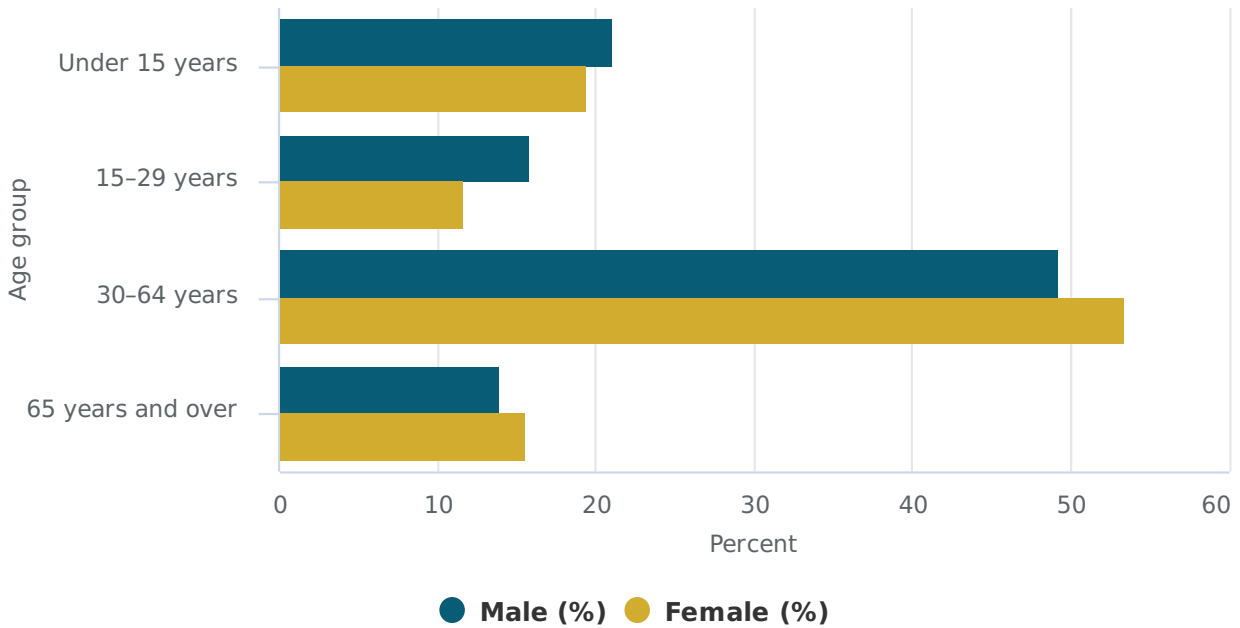
- Engagement with Fulton Hogan and Christchurch Coastal Pathway for traffic management
- Sumner issues in relation to Christchurch City Council Long Term Plan
- Draft National Adaptation Plan for Whakraupo
- Coastal Hazards draft plan change
- Civil Defence Emergency Management – emergency preparedness planning
- Forest fire awareness in Nicholson Park
- Police cameras and crime awareness
- Access to Red Zone land on Wakefield Ave





# Who we are, and who we represent - 2023 data still to be released

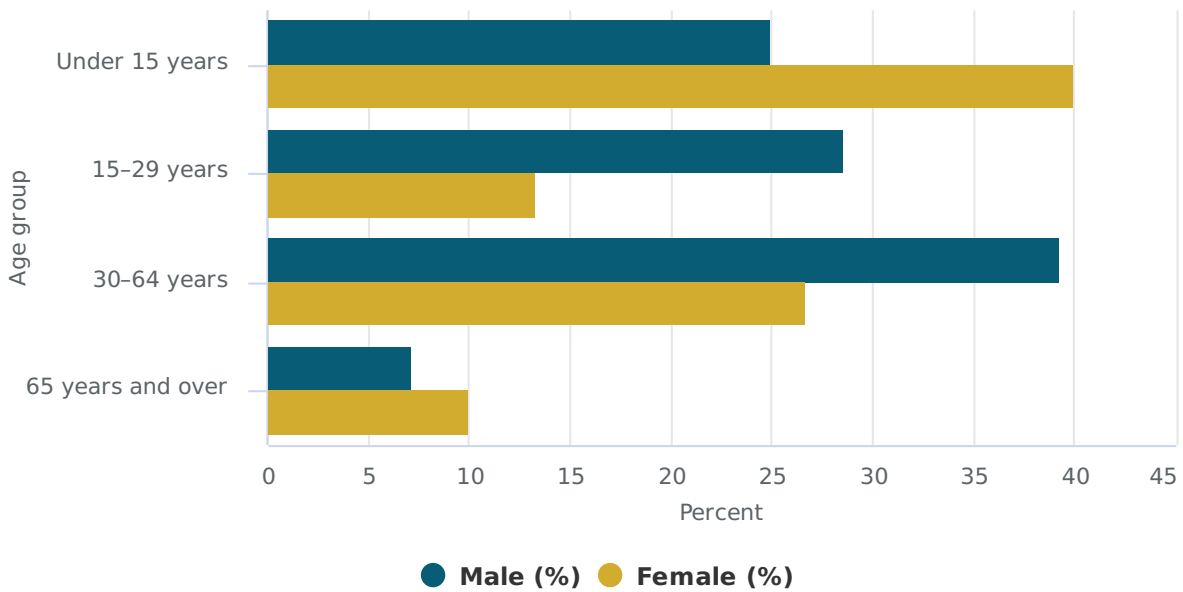
## Age and sex of people in Sumner, 2018 Census



See metadata tab for information about variables and quality.

Stats NZ

## Age and sex of Māori in Sumner, 2018 Census



See metadata tab for information about variables and quality.

Stats NZ

## Visit Us

Sumner Community Residents'  
Association and The Hub,  
57 Nayland Street, Sumner,  
Christchurch 8081

## Contact Us

hub@sumnercommunity.nz  
facebook.com/sumnerhub  
www.sumnercommunity.nz



If the Sumner Community Residents' Association had to draw a picture of itself, we would draw our building at 57 Nayland St. with all ages of people moving in and out of it all day long. The physical building gives us the ability to offer a safe and creative space for our community to connect. This neighbourly place strengthens our communities' resilience.

# Thank you!

Thank you to our funders: Christchurch City Council, Community Organisation Grants Scheme, Lottery Grants Board, Tiki Wine fundraising; for your faith in us to use your money wisely and deliver on our goals.